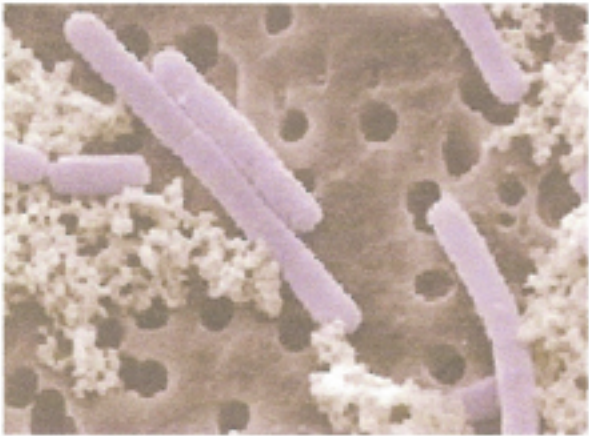
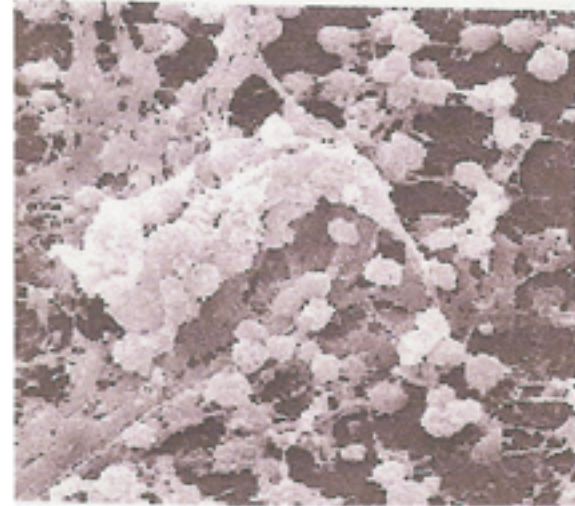


Candida-albicon (Yeast) spore forming, fast growing, simple nutritional requirements, spreads like a weed using mycelium that you can see in the picture. Mycelium will penetrate tissue; their waste is toxic to us. Tartaric acid produced by Candida interferes with the Kreb cycle at the cellular level in your body. Less ATP produced-your energy levels drop and your immune system are weakened, you are susceptible to disease and infections.

Dr. Shaw's book, Biological Treatments for Autism and PDD says that "studies have shown that Candida albicon have supported the establishment of Staphylococcus aureus infection in mice."

Our next character is Staph aureus, (Golden Staph) a spore forming bacteria that is on our skin and if it gets into your blood, your immune system is compromised, you are infected. Staph is a fast grower with simple nutritional requirements and its waste products are toxic to you. You can become very sick from this one, just ask Julie. It is antibiotic resistant. 500,000 people in the U.S. will become infected while in the hospital this year. Your best defense is a strong immune system, (**flora G-Plus**) as you can see Staph also has mycelium and spreads like a weed. The nickname given to Staph is "Golden Staph."

Lactic acid is part of the defense mechanism (immune system) controlling pH which is essential to the growth of good bacteria like acidophilus. Toxic exposure and antibiotics have reduced the numbers to the point where they have lost control.



Our next character is Lactobacillus acidophilus, found in the small intestine. Acidophilus, according to an article in April 1999, Applied and Environmental Microbiology "as Lactic acid bacteria have complex nutritional requirements, and a very slow growth rate." Its by-product Lactic acid is essential to control proper intestinal pH. The problem? Just look at the pictures of Candida & Staph aureus. Then look at acidophilus. No matter how many billions you take it is too weak to take on the energy thieves. In a race for survival, acidophilus will lose every time. It needs help.

It needs a friend that can grow fast in the same pH as Candida and produce a high volume of the L+ Lactic acid to control Candida. That friend is "Mr. G" & I'm working for you in "**flora-G**" and "**flora-G Plus**."

The last character, in this race, is Bacillus coagulans ("Mr. G") found in plants. Bacillus coagulans, like Candida, is also a spore, so it can survive HCL acid and can grow very fast in a wide pH range 4.4-10.6. Optimum growth is 6-7 the same as acidophilus. It produces L+ lactic acid in a greater volume than any Lactobacillus bacteria, essential to the control of Candida overgrowth. So in the race for bacterial survival Bacillus coagulans (**flora-G Plus**) can hold its own and give you a fighting chance against Candida. I'm Mr. "G" and I want to go to work for you. We want to control the energy thieves, "**flora-G Plus**" is the first step for you! To begin the race for control of your Health and Life.

